

# healthLINK<sup>SIX</sup>6

SECURE INFORMATION EXCHANGE

BETTER PRACTICE ~ BETTER CARE

## Installation Guide Companion

Applicable to set up SmartRooms for PIT results

HealthLink Messaging System (HMS) 6.5.x



## Disclaimer

Copyright © HealthLink Limited 2007.

All rights reserved. No reproduction, transmission, transcription, storage in a retrieval system, or translation into any language or by any means, electronic, mechanical, optical, chemical, manual, or otherwise, any part of the this document with the express permission of HealthLink Ltd.

**Liability Notice:** Every effort has been made to ensure that the information in this document, supplied by HealthLink Limited, is accurate and complete. However, as use and interpretation of this document is beyond the control of HealthLink Limited, no liability, either direct or consequential, can be entertained by HealthLink Limited, its agents, or its suppliers.

## Document Control

<b>Document Name</b>	SmartRooms Integration Guide
<b>This Guide is Applicable To</b>	<ul style="list-style-type: none"> <li>• SmartRooms</li> <li>• HealthLink SIX version 6.5.x</li> </ul>
<b>File Name</b>	SmartRooms Integration guide 1.00.doc
<b>Date/Time Created</b>	5/03/2008 4:44:00 p.m.
<b>Author(s)</b>	Bhavesh Daya

<b>Revision Date</b>	<b>Revision Number</b>	<b>Author(s)</b>	<b>Summary of Changes</b>	<b>Changes marked</b>
5/03/2008	v1.00	Bhavesh Daya	First release for review	N

## Table of Contents

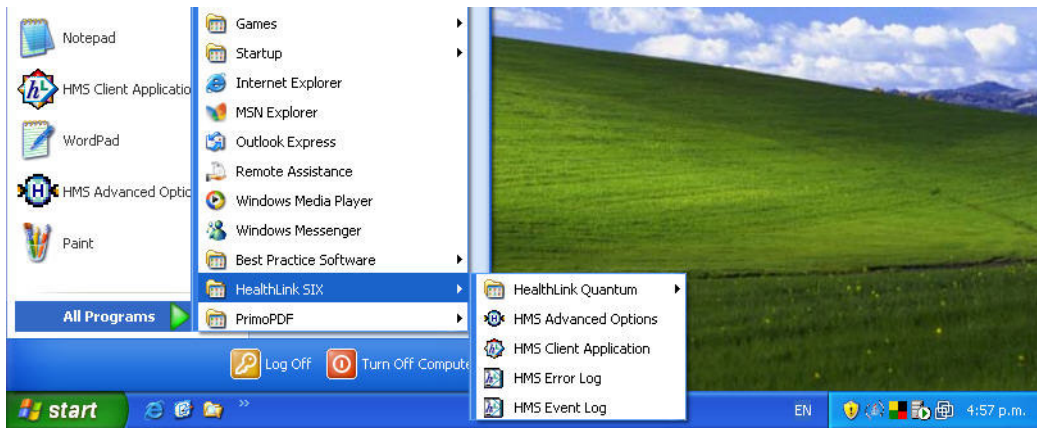
Disclaimer .....	2
Table of Contents .....	4
1 Setting up HealthLink with SmartRooms.....	5
2 Importing Messages .....	7

# 1 Setting up HealthLink with SmartRooms

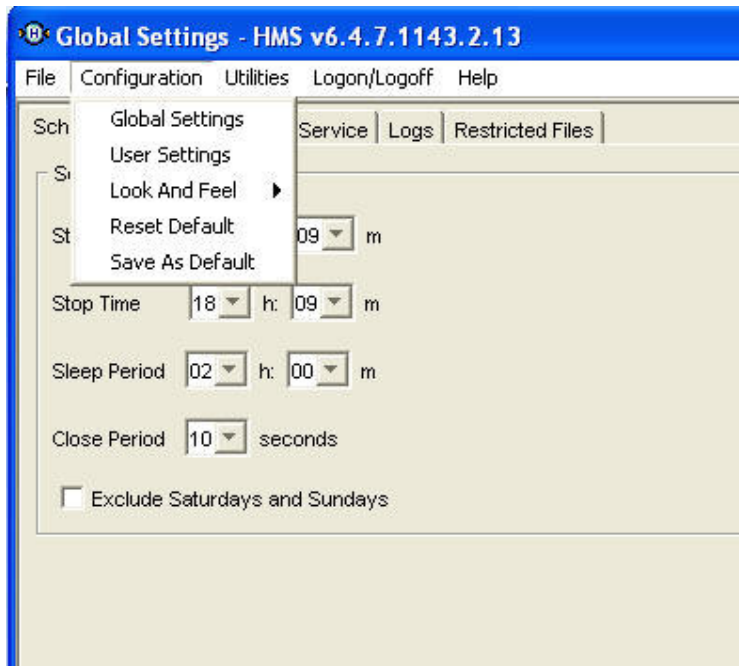
**Please note:** You will need to have the latest version of HealthLink SIX messaging installed. HealthLink will need to be installed on the SmartRooms server

If you are unsure about whether you have the latest HealthLink SIX software, or whether you have HealthLink at all then please contact the HealthLink helpdesk on 1800 125 036

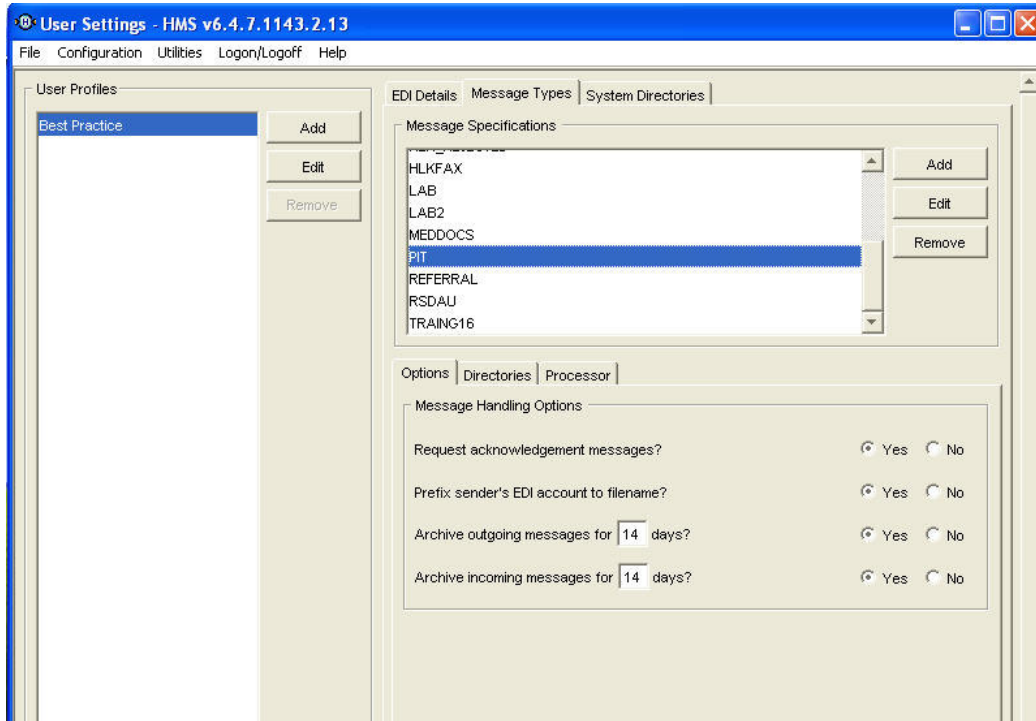
Open HealthLink advanced options. Click **Start > Programes > HealthLink SIX > HMS Advanced Options**



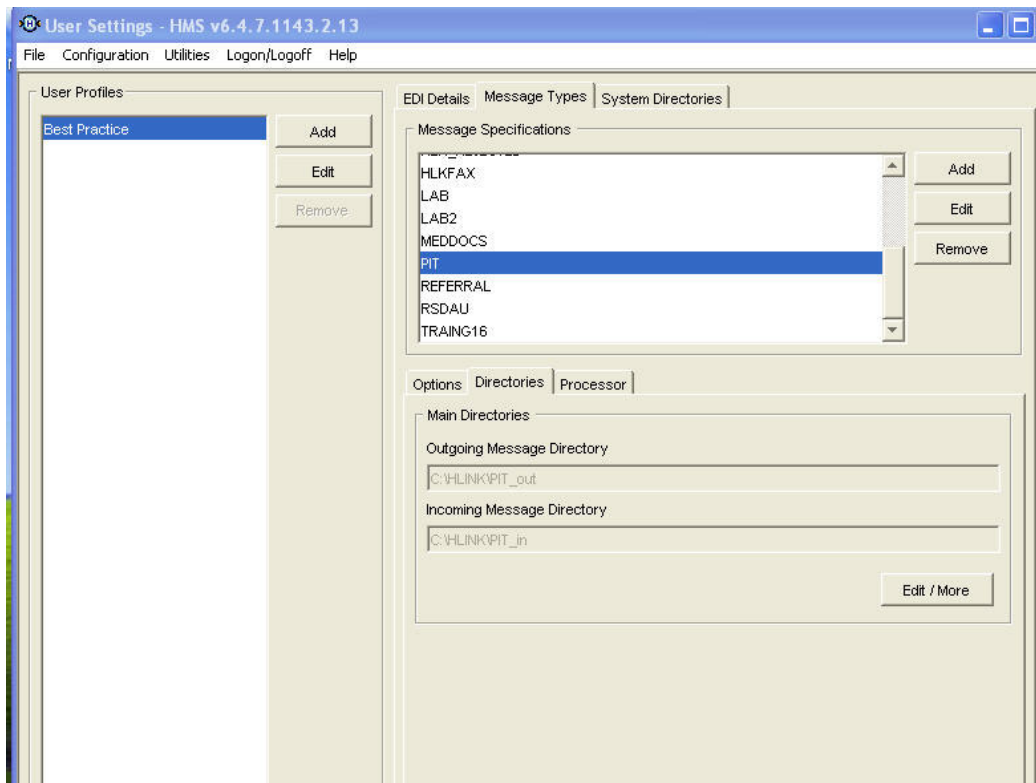
Click **Configuration > User Settings**



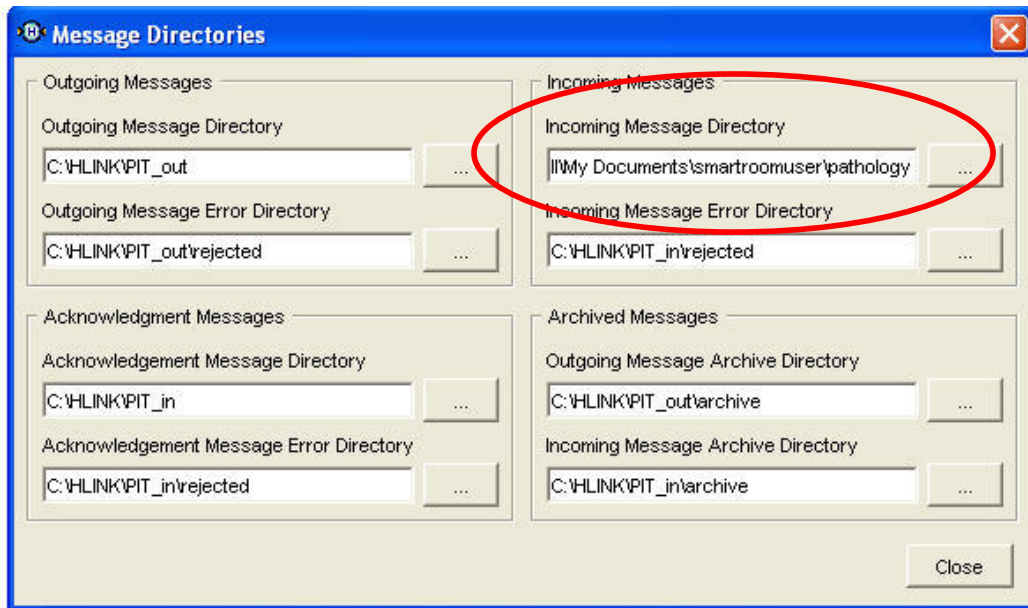
Click on the **Message Types** tab, select **PIT** from the list



Click on the **Directories** tab, and click the **Edit/More** button



In the **Incoming Message Directory** field browse to C:\Documents and Settings\Username\My Documents\smartroomuser\pathology



Click **Close**

Click **File > Exit**. And choose to save any changes.

**Please note:** The smartroomuser\pathology directory will need to be shared and users will need to have read/write permissions to it.

## 2 Importing Messages

To set up the automated import routine, do the following

.....

To manually “import” the messages press the .....

A list of all your current messages will be displayed. You can .... on the message to open it

Australia

Phone toll free: 1800 125 036  
7.00am – 7.00 pm Monday-Friday  
(AEST)

Email

[helpdesk@healthlink.net](mailto:helpdesk@healthlink.net)

If there is a communication problem  
Make it our problem

[www.healthlink.net](http://www.healthlink.net)

Contact us: **Australia** 1800 125 036 **New Zealand** 0800 288 887

