

healthLINK^{SIX}6

SECURE INFORMATION EXCHANGE

BETTER PRACTICE ~ BETTER CARE

Installation Guide Companion

Applicable to set up Monet for PIT results

HealthLink Messaging System (HMS) 6.5.x



Disclaimer

Copyright © HealthLink Limited 2008.

All rights reserved. No reproduction, transmission, transcription, storage in a retrieval system, or translation into any language or by any means, electronic, mechanical, optical, chemical, manual, or otherwise, any part of the this document with the express permission of HealthLink Ltd.

Liability Notice: Every effort has been made to ensure that the information in this document, supplied by HealthLink Limited, is accurate and complete. However, as use and interpretation of this document is beyond the control of HealthLink Limited, no liability, either direct or consequential, can be entertained by HealthLink Limited, its agents, or its suppliers.

Document Control

Document Name	Monet Integration Guide
This Guide is Applicable To	<ul style="list-style-type: none"> • Monet • HealthLink SIX version 6.5.x
File Name	Monet Integration guide 1.01.doc
Date/Time Created	21/07/2008 5:26:00 p.m.
Author(s)	Bhavesh Daya

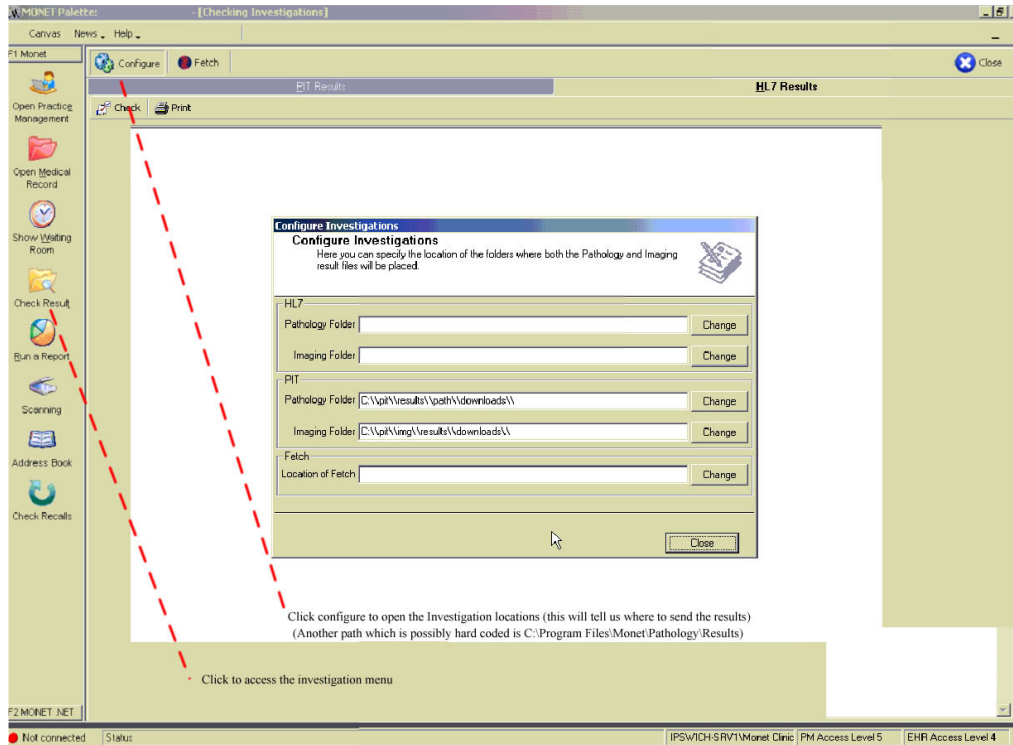
Revision Date	Revision Number	Author(s)	Summary of Changes	Changes marked
10/07/2008	v1.00	Bhavesh Daya	First release for review	N

Table of Contents

Disclaimer	2
Table of Contents	4
1 Finding the PIT download location.....	5
2 Setting up HealthLink with Monet	6
3 Importing Messages	9

1 Finding the PIT download location

From the main screen of Monet click the Monet Palette button to bring up the Monet Palette screen. Then click the **Configure** button to open the Configure Investigations screen.



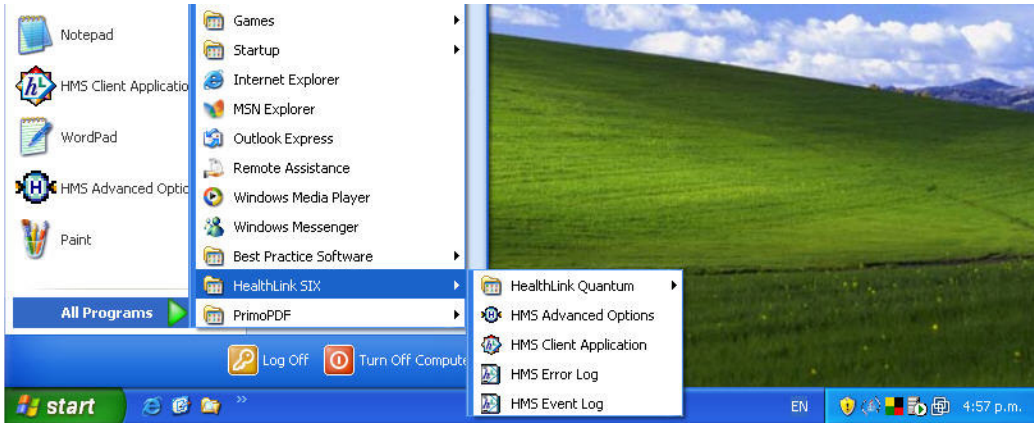
In the **PIT** section, look in the **Pathology Folder** field and copy or write down the path, this is the location where the messages should go.

2 Setting up HealthLink with Monet

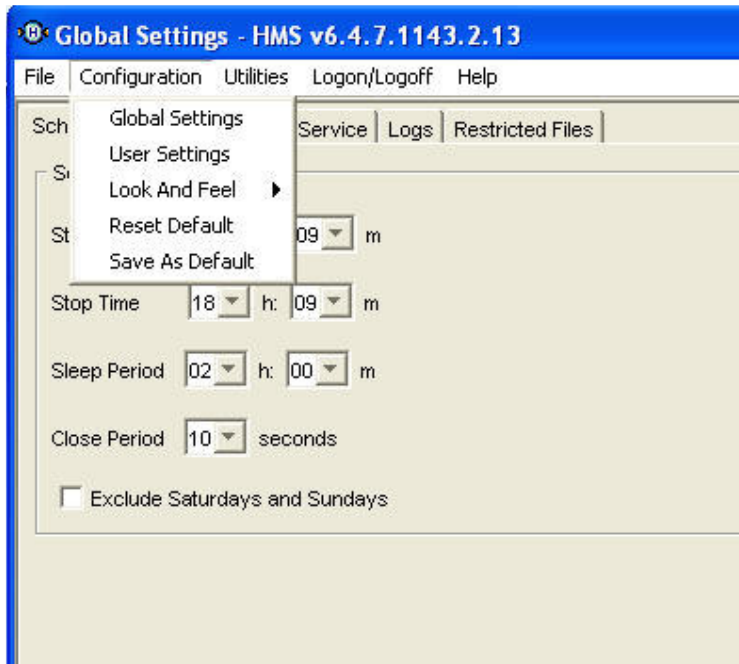
Please note: You will need to have the latest version of HealthLink SIX messaging installed. HealthLink will need to be installed on the Monet server

If you are unsure about whether you have the latest HealthLink SIX software, or whether you have HealthLink at all then please contact the HealthLink helpdesk on 1800 125 036

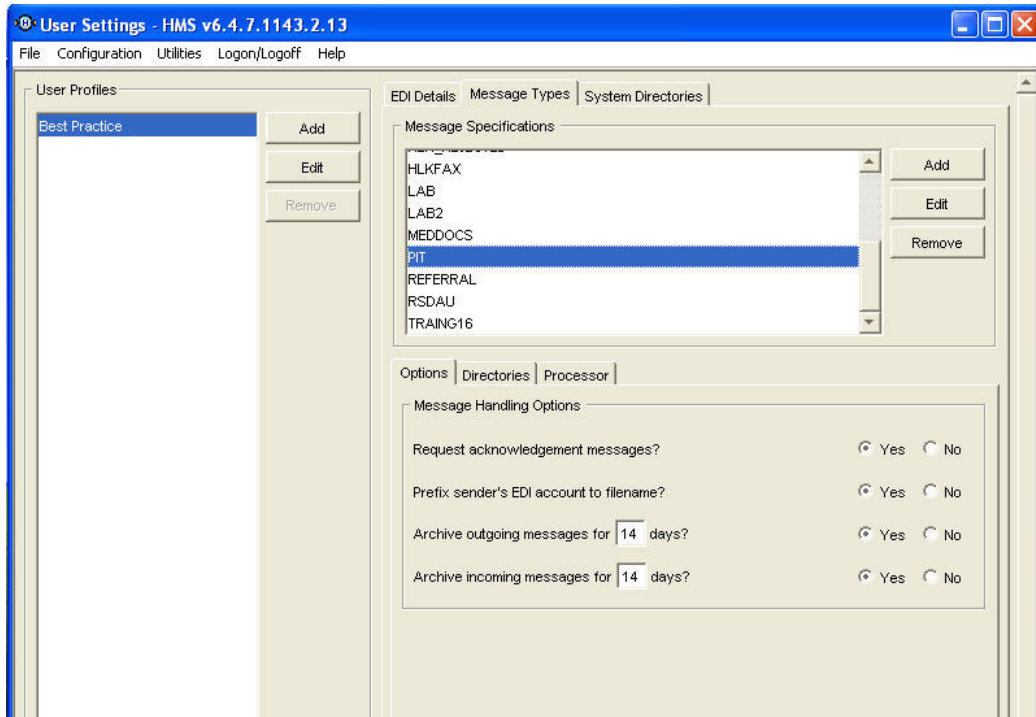
Open HealthLink advanced options. Click **Start > Programes > HealthLink SIX > HMS Advanced Options**



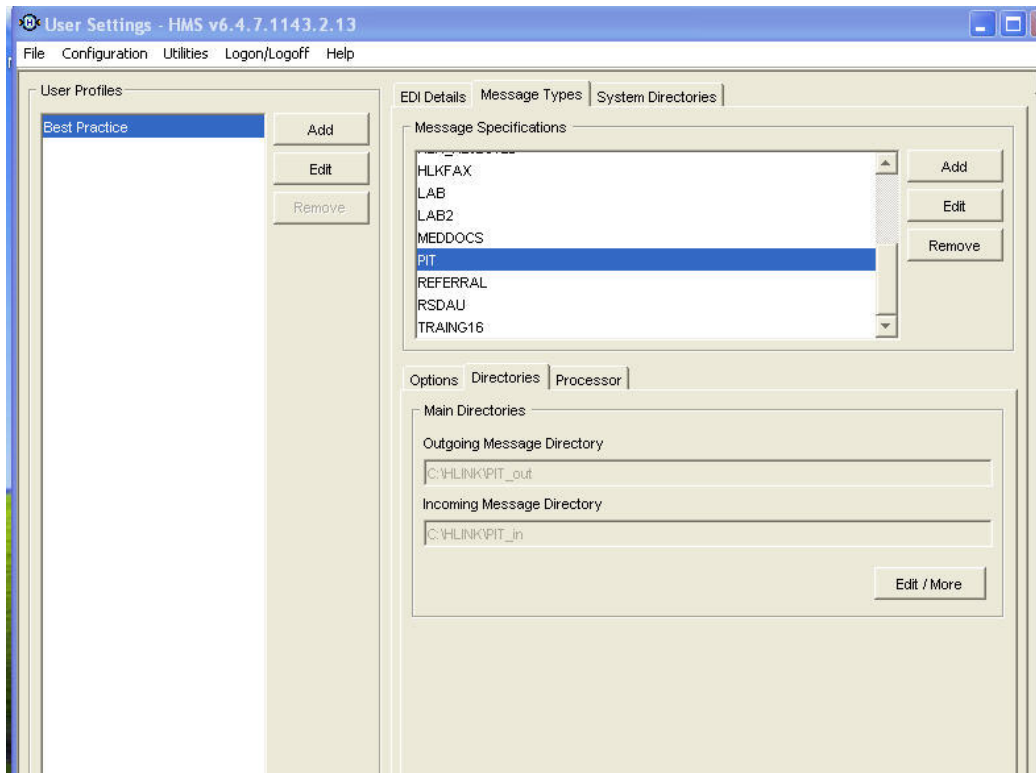
Click **Configuration > User Settings**



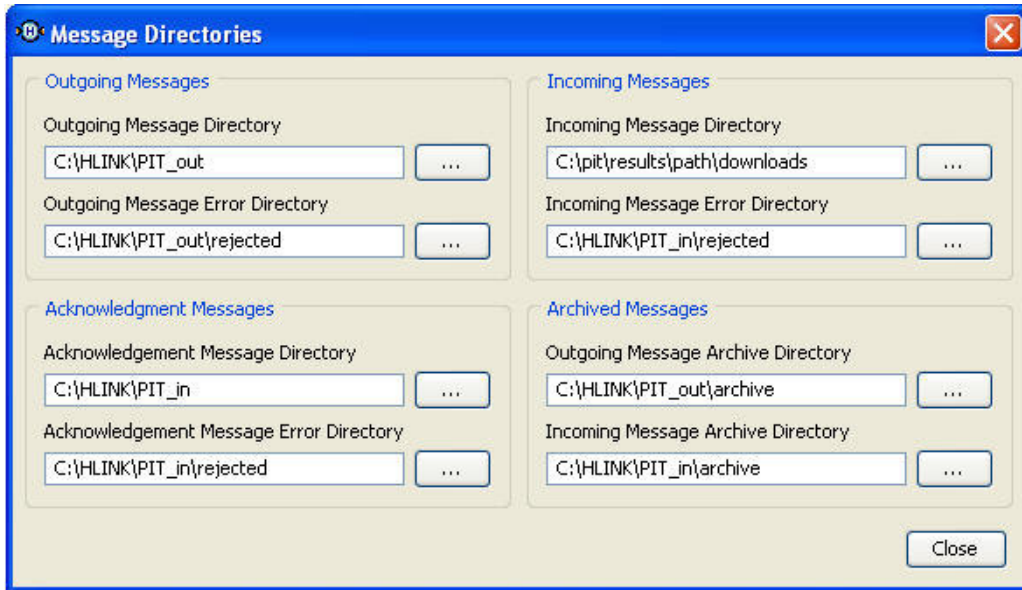
Click on the **Message Types** tab, select **PIT** from the list



Click on the **Directories** tab, and click the **Edit/More** button



In the **Incoming Message Directory** field browse to the location found in the above steps, in this case C:\pitresults\path\downloads



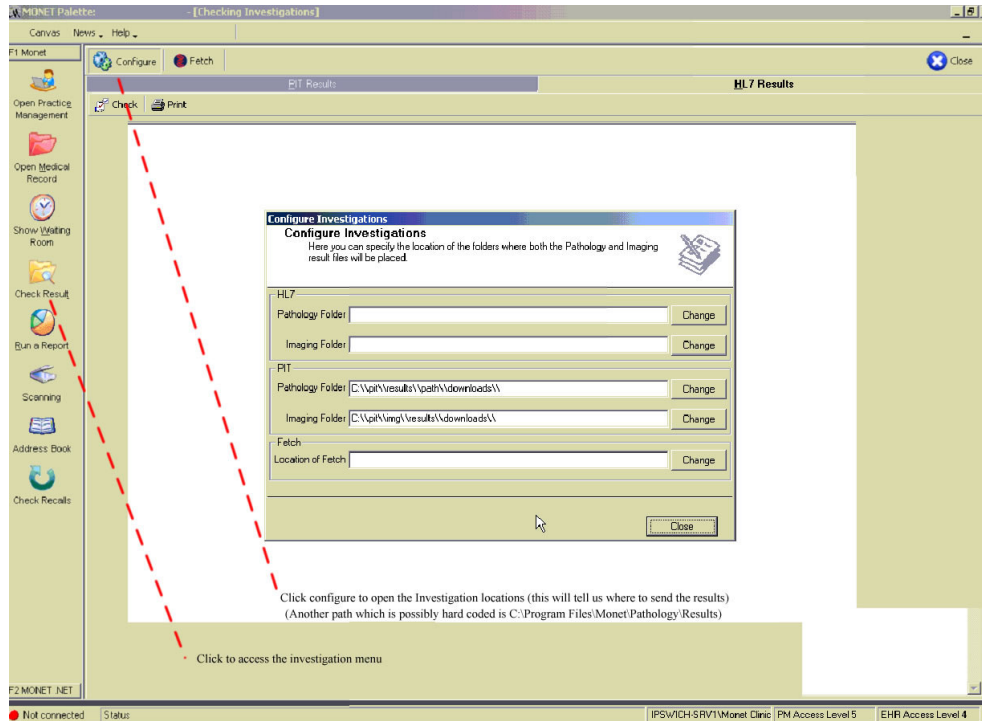
Click **Close**

Click **File > Exit**. And choose to save any changes.

Please note: The Monet pathology directory will need to be shared and users will need to have read/write permissions to it.

3 Importing Messages

To manually “import” the messages press the **Check Result** button on the **Monet Palette Screen**



A list of all your current messages will be displayed. You can double click on the message to open it. The **Views** drop down menu can also be used to show different messages

MONET Palette: - [Checking Investigations]

Canvas News Help

F1 Monet

Configure Fetch Close

PIT Results HL7 Results

Check Match Patient Mark as Pending View Open Medical Record Print Delete

View New UnMatched Results Show only my results Show all results

Match	Result Code	Patient	DOB	Address	Request By	Requested Tests	Phone	Medic
Path	75358	PATIENT_PETER	30/05/1948	12 EASY ST. HOME	Dr. Tomas C. Testing (1034572J)	BIOCHEMICAL PROF	07 3333 4444	14867

F2 MONET NET

Not connected Status | INALA-SRV1\Monet Clinic | PM Access Level 5 | EHR Access Level 4

Notes

Notes



Australia

Phone toll free: 1800 125 036
7.00am – 7.00 pm Monday-Friday
(AEST)

Email

helpdesk@healthlink.net

If there is a communication problem
Make it our problem

www.healthlink.net



Contact us: **Australia** 1800 125 036 **New Zealand** 0800 288 887

