

healthLINK^{SIX}6

SECURE INFORMATION EXCHANGE

BETTER PRACTICE ~ BETTER CARE

Integration Guide

- MedTech32
- LAB2, RSDAU, PIT and BROADCAST Messages
- HealthLink Messaging System (HMS) 6.5.x



Disclaimer

Copyright © HealthLink Limited 2007.

All rights reserved. No reproduction, transmission, transcription, storage in a retrieval system, or translation into any language or by any means, electronic, mechanical, optical, chemical, manual, or otherwise, any part of the this document with the express permission of HealthLink Ltd.

Liability Notice: Every effort has been made to ensure that the information in this document, supplied by HealthLink Limited, is accurate and complete. However, as use and interpretation of this document is beyond the control of HealthLink Limited, no liability, either direct or consequential, can be entertained by HealthLink Limited, its agents, or its suppliers.

Document Control

Document Name	MedTech32 Integration Guide
This Guide is Applicable To	<ul style="list-style-type: none"> • MedTech32 • LAB2, RSDAU, PIT and BROADCAST Messages • HealthLink SIX version 6.5.x
File Name	MedTech32 Integration Guide v2.01.doc
Date/Time Created	21/08/2007 11:46:00 a.m.
Author(s)	Bhavesh Daya, Mel Nepomuceno

Revision Date	Revision Number	Author(s)	Summary of Changes	Changes marked
16/09/2005	1.1	Russell Neal	Installation Guide Companion for MedTech32, LAB2 and HMS 6.4.x	N
15/09/2007	1.1	Russell Neal	Installation Guide Companion for MedTech32, RSDAU and HMS 6.4.x	N
21/08/2007	2.00	Bhavesh Daya Mel Nepomuceno	Version 1.1 guides re-formatted, corrected, updated and consolidated into this release	N
01/02/2008	2.01	Bhavesh Daya	Minor formatting changes	N

Table of Contents

Before You Begin	5
Setting Up MedTech32 with HealthLink.....	6
Preparing MedTech32 for Messaging	6
Setting Up for LAB2, RSDAU, PIT and BROADCAST Messaging	7
Importing Messages into MedTech32.....	10

Before You Begin

- Make sure you have installed the latest version of HealthLink SIX messaging system (HMS version 6.5.x) in your system
- The *HLINK* directory described in this guide should be **shared** and users will need to have **full (read/write) permission** to it. We advise you to use full network paths when you configure the HLINK directory. For example:
 - \\servername\HLINK\HL7_in\LAB2
 - \\servername\HLINK\HL7_in\RSDAU
 - \\servername\HLINK\PIT_in

servername is the name of your computer or server where HealthLink SIX is installed

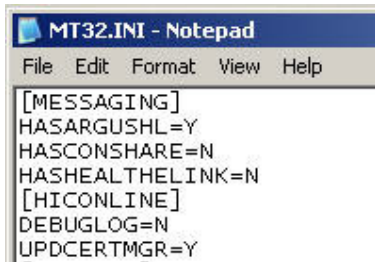
- If you are unsure on any of the above, please contact the HealthLink Helpdesk on 1800 125 036

Setting Up MedTech32 with HealthLink

Preparing MedTech32 for Messaging

By default messaging is turned off in MedTech32. To change this you must complete the following steps before integration with HealthLink SIX can proceed. These steps must be completed on the MedTech Server.

1. From the Windows desktop, double click the **My Computer** icon
2. Double click on the drive where MedTech is installed (usually C:)
3. Double click on the **MT32** folder
4. Double click on the **BIN** folder
5. Locate and open (double click on) the file called **MT32.ini**
6. Inside **MT32.ini** file, locate the section named **[MESSAGING]**.
7. Change the line **HASARGUSHL=N** to **HASARGUSHL=Y**

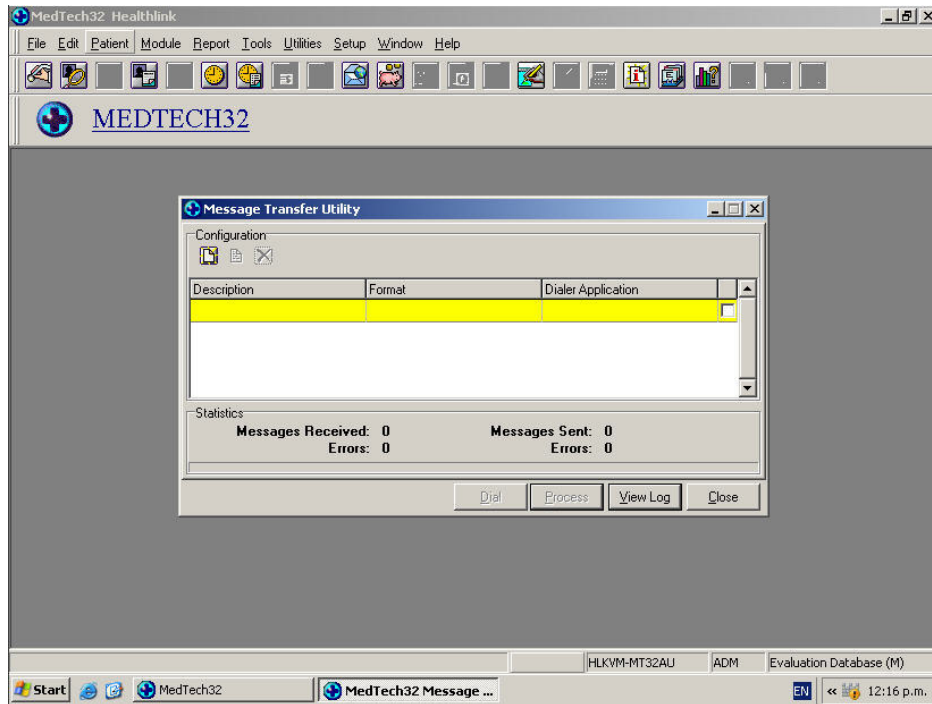


```
MT32.INI - Notepad
File Edit Format View Help
[MESSAGING]
HASARGUSHL=Y
HASCONSHARE=N
HASHEALTHELINK=N
[HICONLINE]
DEBUGLOG=N
UPDCERTMGR=Y
```

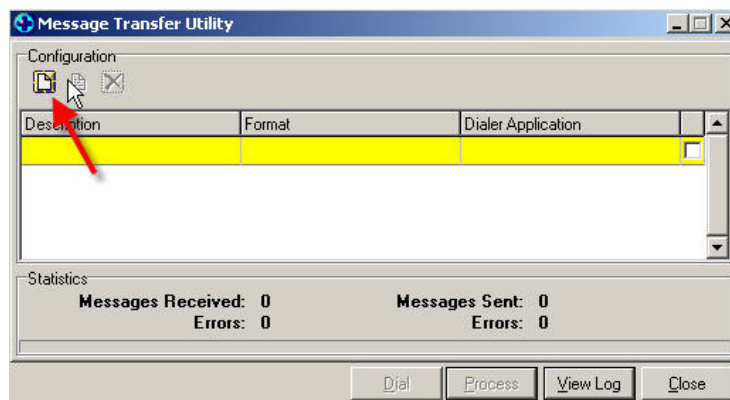
8. Save and then close the file.

Setting Up for LAB2, RSDAU, PIT and BROADCAST Messaging

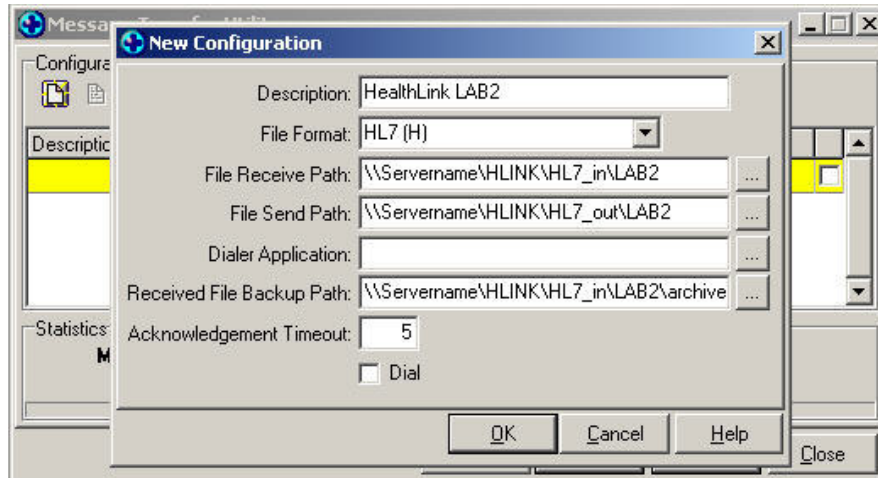
1. Open MedTech32.
2. From the menu, click **Tools > Message Transfer > Message Transfer Utility**. The **Message Transfer Utility** window will appear.



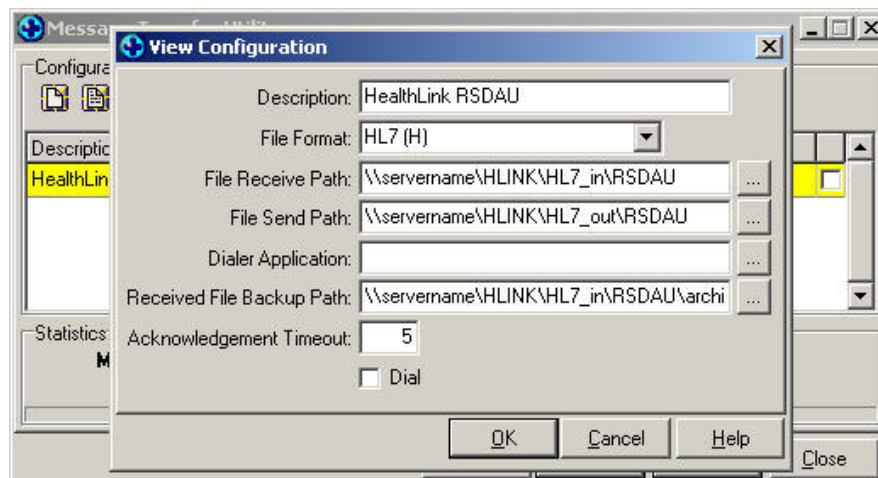
3. Click the **Add a new configuration** icon. The **New Configuration** window will appear



4. Fill in the **New Configuration** window for LAB2 messaging
 - Type *HealthLink LAB2* in the **Description** field
 - Set (select) *HL7 (H)* for the **File Format** field
 - Browse and select the following folders
 - *\\servername\HLINK\HL7_in\LAB2* for **File Receive Path** field
 - *\\servername\HLINK\HL7_out\LAB2* for **File Send Path** field
 - *\\servername\HLINK\HL7_in\LAB2\archive* for **Received File Backup Path** field



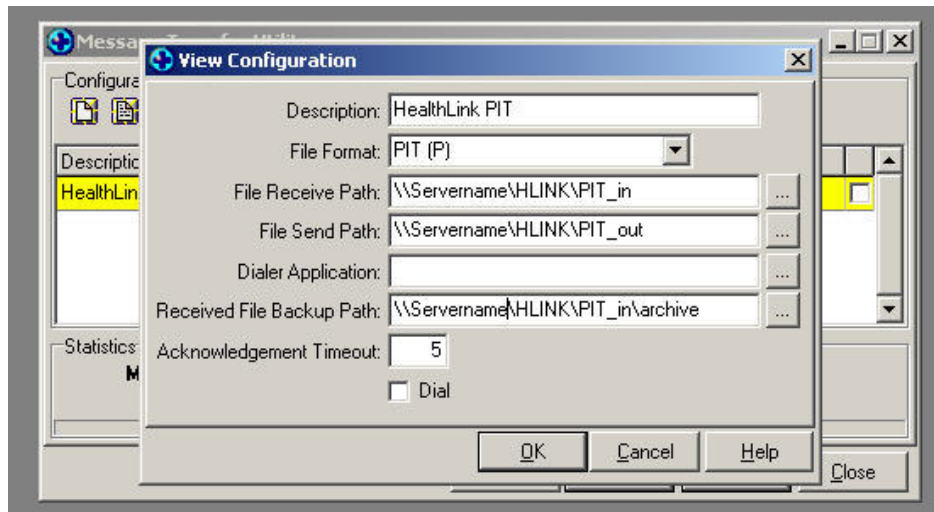
5. Click the **OK** button to save the LAB2 messaging setup.
6. From the **Message Transfer Utility** window, click the **Add a new configuration** icon. The **New Configuration** window will appear
7. Fill in the **New Configuration** entry window for RSDAU messaging
 - Type *HealthLink RSDAU* in the **Description** field
 - Set (select) *HL7 (H)* for the **File Format** field
 - Browse and select the following folders
 - *\\servername\HLINK\HL7_in\RSDAU* for **File Receive Path** field
 - *\\servername\HLINK\HL7_out\RSDAU* for **File Send Path** field
 - *\\servername\HLINK\HL7_in\RSDAU\archive* for **Received File Backup Path** field



8. Click the **OK** button to save the RSDAU messaging setup.
9. From the **Message Transfer Utility** window, click the **Add a new configuration** icon. The **New Configuration** window will appear
10. Fill in the **New Configuration** window for PIT and BROADCAST messaging
 - Type *HealthLink PIT* in the **Description** field
 - Set (select) *PIT (P)* for the **File Format** field
 - Browse and select the following folders
 - `\\servername\HLINK\PIT_in` for **File Receive Path** field
 - `\\servername\HLINK\PIT_out` for **File Send Path** field
 - `\\servername\HLINK\PIT_in\archive` for **Received File Backup Path** field

If you are in **South Australia, Western Australia** or **Tasmania**, browse and select the following folders:

- `\\servername\HLINK\FF_in\BROADCAST` for **File Receive Path** field
- `\\servername\HLINK\FF_out\BROADCAST` for **File Send Path** field
- `\\servername\HLINK\FF_in\BROADCAST\archive` for **Received File Backup Path** field

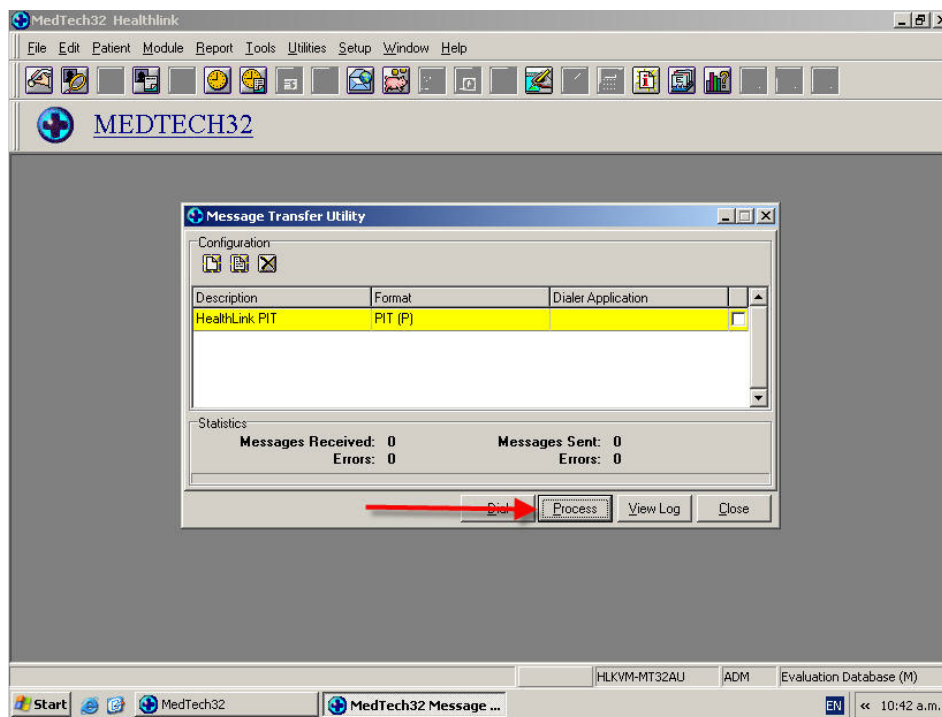


11. Click the **OK** button to save the PIT and BROADCAST messaging setup.
12. Click the **Close** button to exit the **Message Transfer Utility** window.

Importing Messages into MedTech32

The procedure below describes how to manually import messages from MedTech32. It is provided as a means to validate whether or not you have successfully set up the messaging for MedTech32. Note that MedTech32 also has the capability to automatically import the messages on schedule. Please refer to your MedTech32 documentation or contact MedTech support on how to best set up MedTech32 for importing messages for your specific scenario and or requirements.

1. Go the **Message Transfer Utility** window (From the menu, click **Tools > Message Transfer > Message Transfer Utility**)
2. Select the message you want to import (In this example HealthLink PIT). Then click the **Process** button



3. Click **Close** once the message import is completed.

4. The details of messages can be viewed in the **Provider Inbox** window. From the Medtech32 menu, click **Module > Inbox > Provider Inbox**. A list of all your current messages will be displayed. Double click on the message to open it.

