

# healthLINK<sup>SIX</sup>6

SECURE INFORMATION EXCHANGE

BETTER PRACTICE ~ BETTER CARE

## Installation Guide Companion

Applicable to set up Medical Wizard for PIT results

HealthLink Messaging System (HMS) 6.5.x



## Disclaimer

Copyright © HealthLink Limited 2007.

All rights reserved. No reproduction, transmission, transcription, storage in a retrieval system, or translation into any language or by any means, electronic, mechanical, optical, chemical, manual, or otherwise, any part of the this document with the express permission of HealthLink Ltd.

**Liability Notice:** Every effort has been made to ensure that the information in this document, supplied by HealthLink Limited, is accurate and complete. However, as use and interpretation of this document is beyond the control of HealthLink Limited, no liability, either direct or consequential, can be entertained by HealthLink Limited, its agents, or its suppliers.

## Document Control

<b>Document Name</b>	Medical Wizard Integration Guide
<b>This Guide is Applicable To</b>	<ul style="list-style-type: none"> <li>• Medical Wizard</li> <li>• HealthLink SIX version 6.5.x</li> </ul>
<b>File Name</b>	Medical Wizard Integration guide 1.00.doc
<b>Date/Time Created</b>	5/03/2008 4:44:00 p.m.
<b>Author(s)</b>	Bhavesh Daya

<b>Revision Date</b>	<b>Revision Number</b>	<b>Author(s)</b>	<b>Summary of Changes</b>	<b>Changes marked</b>
5/03/2008	v1.00	Bhavesh Daya	First release for review	N

# Table of Contents

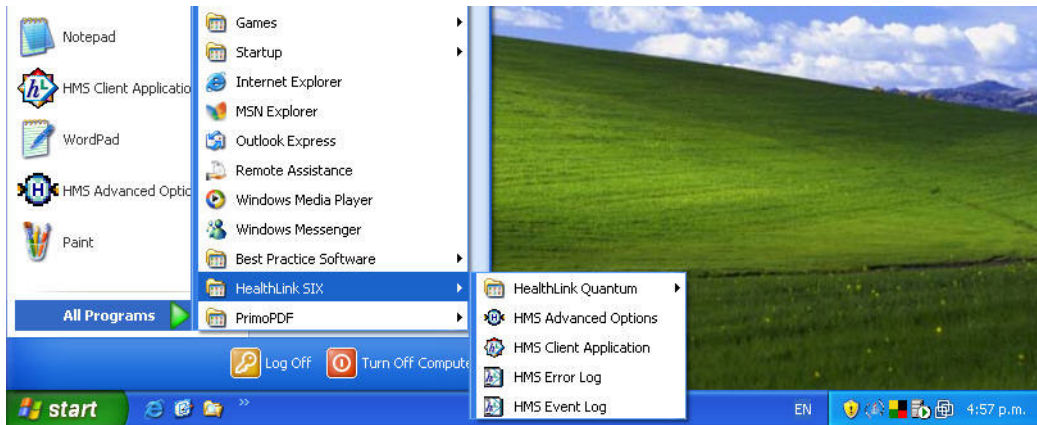
Disclaimer .....	2
Table of Contents .....	4
1 Setting up HealthLink with Medical Wizard .....	5
2 Importing Messages .....	7

# 1 Setting up HealthLink with Medical Wizard

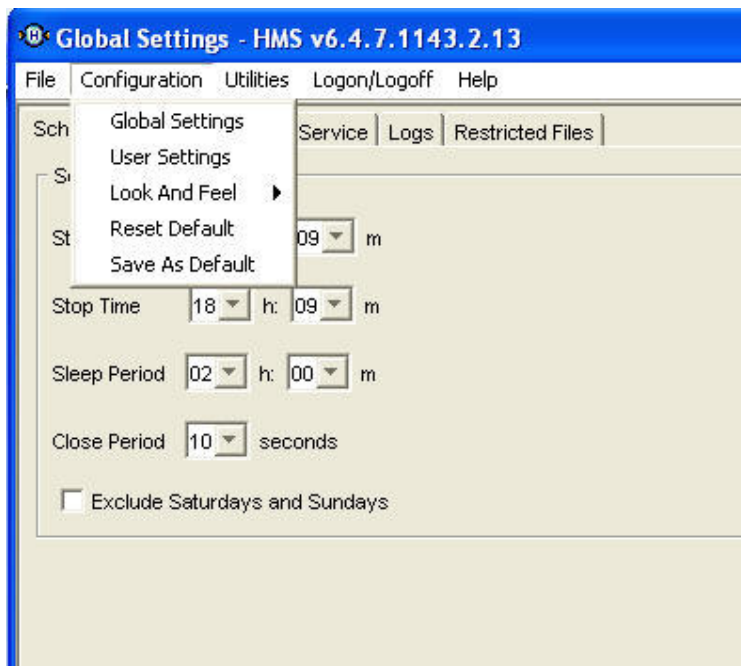
**Please note:** You will need to have the latest version of HealthLink SIX messaging installed. HealthLink will need to be installed on the Medical Wizard server

If you are unsure about whether you have the latest HealthLink SIX software, or whether you have HealthLink at all then please contact the HealthLink helpdesk on 1800 125 036

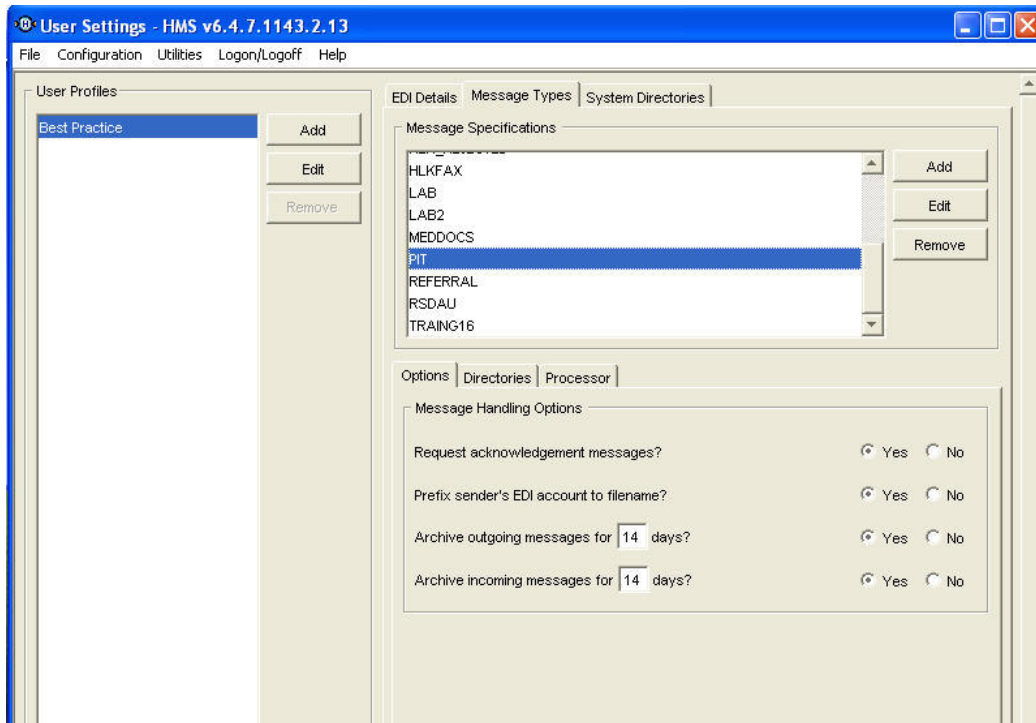
Open HealthLink advanced options. Click **Start > Programes > HealthLink SIX > HMS Advanced Options**



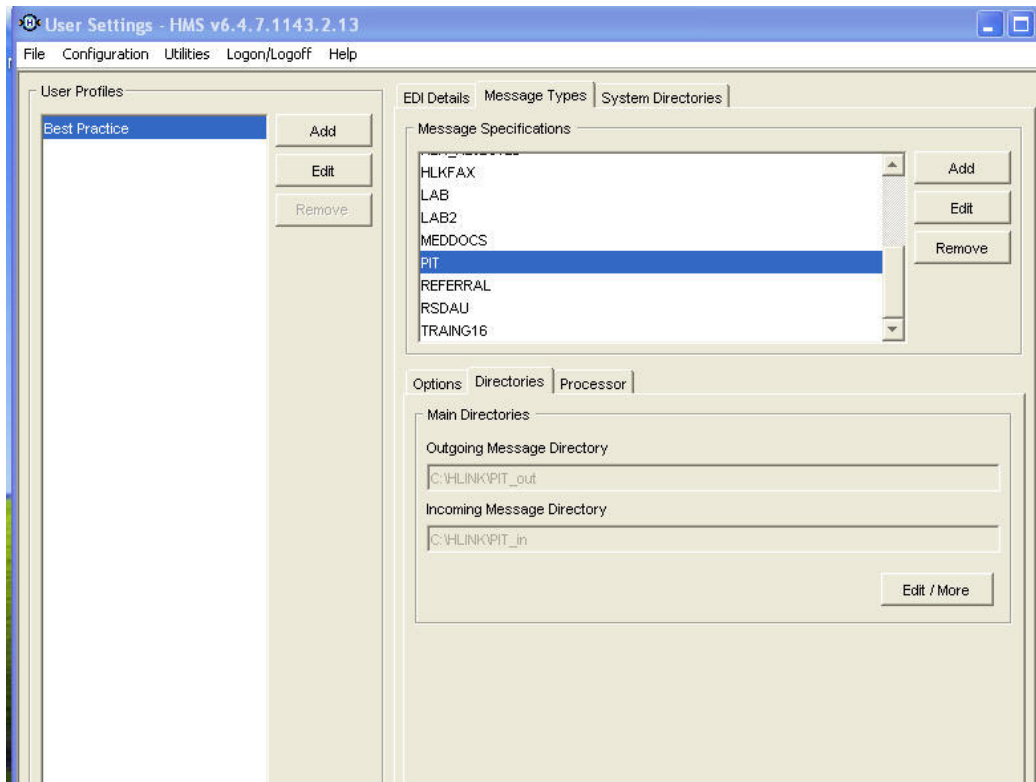
Click **Configuration > User Settings**



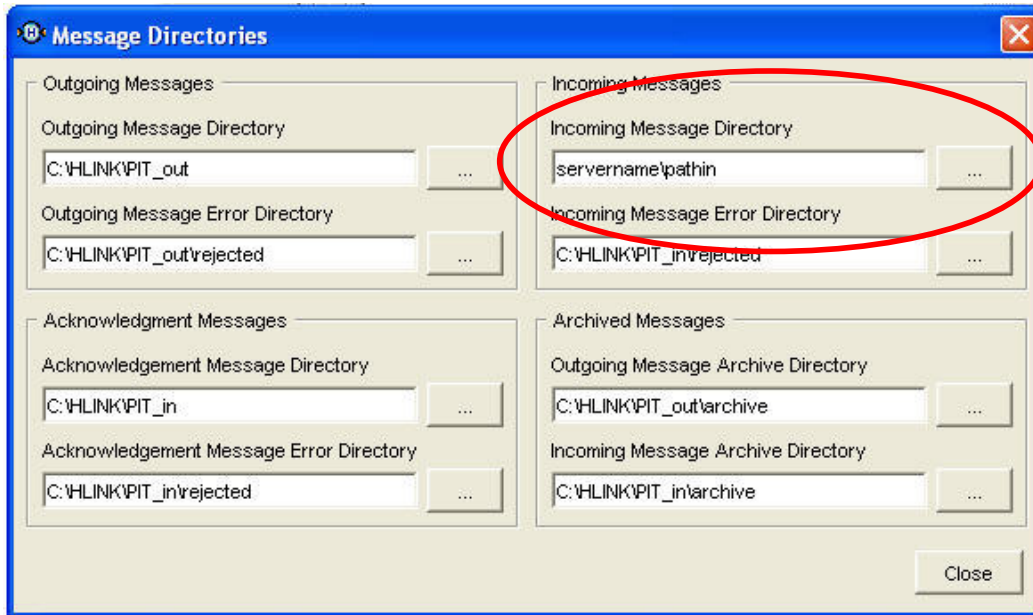
Click on the **Message Types** tab, select **PIT** from the list



Click on the **Directories** tab, and click the **Edit/More** button



In the Incoming Message Directory field browse to servername\pathin\directory



Click **Close**

Click **File > Exit**. And choose to save any changes.

**Please note:** The pathin directory will need to be shared and users will need to have read/write permissions to it.

## 2 Importing Messages

To set up the automated import routine, do the following

.....

To manually “import” the messages press the .....

A list of all your current messages will be displayed. You can .... on the message to open it

